

Student Installation of ArcGIS 10.x for GIS in Water Resources University of Texas at Austin, Utah State University

Prepared by David R. Maidment
Updated by David Tarboton
September 2015

There are five steps to this process:

- (1) [Get an ESRI Account](#)
- (2) [Prepare your computer](#)
- (3) [Obtain an authorization number and the software](#)
- (4) [Install the software and validate your authorization number](#)
- (5) [Start using the software](#)

Here are the instructions for these steps:

(1) ESRI Account

If you already have a Username and Password for your ESRI Account, then skip this step.

If you have received an email from your instructor or university ESRI license administrator follow the link in it to obtain an account associated with your organization. This account will allow you to use ArcGIS online processing functions.

An organizational account is not required to use the student license, but it is simpler to just keep track of one account.

If you want to create an account independent of your organization, go to <https://webaccounts.esri.com/CAS/index.cfm> and choose **Create an Account**. Add your name and email address.

Create an Esri Account

First Name

Last Name

E-mail Address

We will send you details on how to finalize your account.

Once you hit “Create an Account”, you will sent an email, as shown below, which you can click on to “Activate your Account”

Esri Account

Activate Your Account

Thank you for signing up for an Esri Account. You are just one step from getting started. Please click the button below to activate your account.

Review the [Terms of Use](#).

Need Help or Have Questions?

If you are in the US and are having difficulty activating your Esri Account, please contact Esri Customer Service:

E-mail: service@esri.com

Toll-free phone: 888-377-4575 (option 5)

Fax: 909-793-4801

Hours: 5:00 a.m. - 5:00 p.m. (Pacific Time), Monday - Friday

If you are outside of the US, contact [your local Esri office](#).

Regards,
The Esri Accounts Team

[Activate Your
Account](#)

You'll be presented with a large screen with a lot of information that needs to be filled in. Fill out this screen and choose **Create Account** at the bottom.

Welcome, David Maidment

Your Account Login

Username

6 to 24 characters in length; letters, numbers and '@_.' characters only.

Password

Confirm Password

Password must be at least 8 characters and have at least one number and one letter.

Profile Information

Organization

Address

This will establish your User Name and Password for ArcGIS Online and for validating your software.

(2) Prepare Your Computer

- (a) Check the ESRI System Requirements to make sure your computer has the required hardware and software to support the installation of ArcGIS
<http://desktop.arcgis.com/en/desktop/latest/get-started/system-requirements/arcgis-desktop-system-requirements.htm>

Please note that ArcGIS runs under the Windows operating system and does not run on Macintosh computers, unless you have a boot option to bring up the Macintosh using Windows. ArcGIS is a fairly large program and its not well suited for “vintage” laptop or desktop

computers. If you have difficulty loading or running the program on your computer, it may not really have enough capacity to do that. In that case, you can use the computers in one of the university labs.

Be careful to ensure that your computer has the right operating system and also the necessary Service Packs installed for that operating system. If you've had your computer for a long time and not installed any Service Pack updates, your operating system might not be up to date enough to run ArcGIS Desktop.

(b) If necessary, install the Microsoft .NET Framework. ArcGIS will run with .Net Framework 3.5.1 or later. <http://www.microsoft.com/en-us/download/details.aspx?id=22>

(c) If you already have a previous version of ArcGIS Desktop installed on your computer, you'll need to Uninstall it before installing the new one. To do this, Go to **Control Panel/Programs and Features** and right click on the icon for ArcGIS and follow the Uninstall instructions.

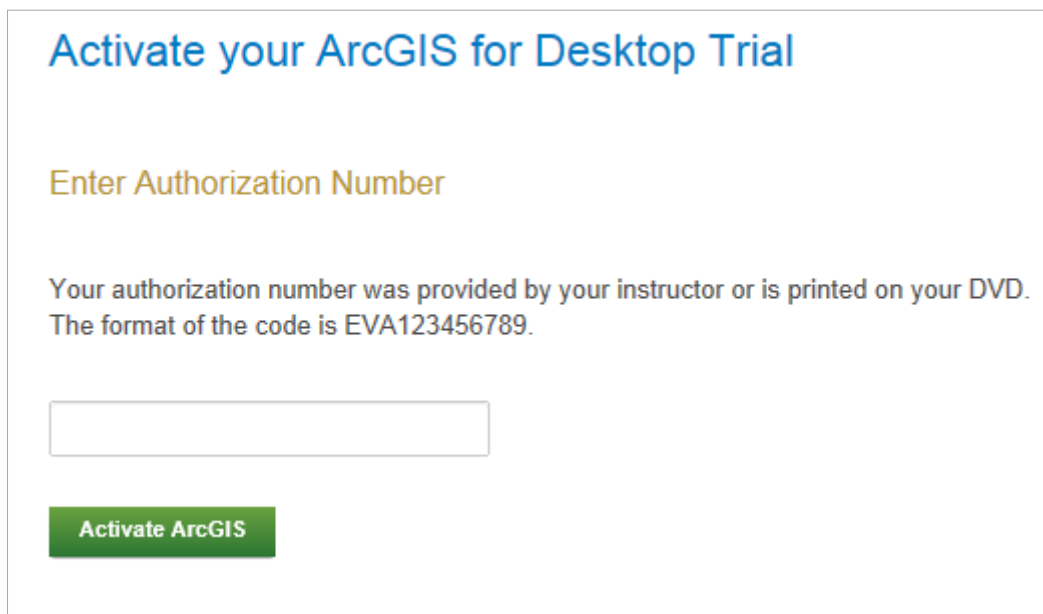
(3) Obtain an Authorization Number and the Software

Your instructor will send you a software authorization number with the form EVA123456789. This allows you to use one copy of the ArcGIS Desktop software and its extensions for one year on your own computer.

Go to **ArcGIS for Desktop Student Trial**

<http://www.esri.com/landing-pages/software/arcgis/arcgis-desktop-student-trial>

and login with the Username and Password for your ESRI Account. You'll be asked to input your Authorization Number and then Activate ArcGIS.



Activate your ArcGIS for Desktop Trial

Enter Authorization Number

Your authorization number was provided by your instructor or is printed on your DVD.
The format of the code is EVA123456789.

Activate ArcGIS

You will be presented with a choice as to Versions, choose Version 10.3 or 10.3.1. At the time of this writing version 10.3.1 was not available on this website, but it should be shortly. Differences between versions 10.3 and 10.3.1 are unlikely to affect this class. They are listed at <https://desktop.arcgis.com/en/desktop/latest/main/get-started/whats-new-in-arcgis-1031.htm>. A temporary link to the 10.3.1 installer file is on the USU GIS in Water Resources website.

Select a Version

Select the version of ArcGIS for Desktop you would like to download if you have not already received a DVD. If you have a DVD from your instructor, please follow the instructions in the Install Guide.



Here are the instructions on how to install the software. Use your EVA number not the one shown below.

Please follow the steps below to download and install ArcGIS for Desktop.

1. If you do not currently have an earlier version of ArcGIS installed on your machine, proceed to step 2.

If you have ArcGIS version 10.1 or later installed, you do not need to uninstall it before installing version ; the ArcGIS setup package will detect and upgrade your ArcGIS for Desktop software. If you have ArcGIS version 10.0 or earlier installed, please uninstall it using the Uninstall Utility (download below) before installing ArcGIS .

2. Download ArcGIS for Desktop, Microsoft .NET Framework 3.5, and the other files you would like to install. Please note that ArcGIS Data Interoperability, ArcGIS Data Reviewer, and ArcGIS Workflow Manager require ArcGIS for Desktop.
 - When downloading with the Esri Download Manager, you can select and download multiple products. However, only one product should be launched at a time when the downloads are complete.
 - Make sure you have write access to your download directory location as well as your ArcGIS installation directory location, and that no one is accessing it.
3. Install the Microsoft .Net Framework 3.5 Service Pack 1 below.
 - ArcGIS Pro requires [Microsoft .NET Framework 4.5](#) and [Microsoft Internet Explorer](#) version 8 or newer. Before running the installation program for ArcGIS Pro, ensure that your machine meets these prerequisites. [Quick start for ArcGIS Pro](#) provides an overview of installing and setting up ArcGIS Pro and links to detailed resources, including [system requirements](#).
 - ArcMap requires [Microsoft .NET Framework 3.5 SP1](#) and [Microsoft Internet Explorer](#) version 7 or newer. Before running the installation program for ArcMap, ensure that your machine meets these prerequisites. The [quick start guide](#) provides an overview of installing and setting up ArcMap and links to detailed resources, including [system requirements](#).
4. Install and authorize ArcGIS for Desktop
 - Select a destination folder to extract the install files to. If you choose, you can automatically launch the setup after the files have been extracted.
 - When prompted, select **ArcGIS for Desktop Advanced Single Use**.
 - When prompted, accept the default, **I do not wish to authorize any extensions** at this time. The extensions will be authorized automatically.
 - Enter your authorization number: EVA **<your number>**

In the succeeding menu, select “ArcGIS for Desktop” Download (811 MB). This takes a little while and may require clicking to activate a download manager.

File Description	Documentation	Download Size		
Microsoft .NET Framework 3.5 Service Pack 1		2.82 MB	Download	English
ArcGIS Uninstall Utility	Read Me	1.18 MB	Download	English
ArcGIS for Desktop	Install Guide	843.74 MB	Download	English
ArcGIS Pro	Install Guide	653.16 MB	Download	English
ArcGIS Data Interoperability for Desktop		533.00 MB	Download	English
ArcGIS Data Reviewer for Desktop	Install Guide	78.95 MB	Download	English
ArcGIS Workflow Manager for Desktop	Install Guide	47.25 MB	Download	English
ArcReader		474.52 MB	Download	English
ArcGIS Tutorial Data for Desktop		1.65 GB	Download	English

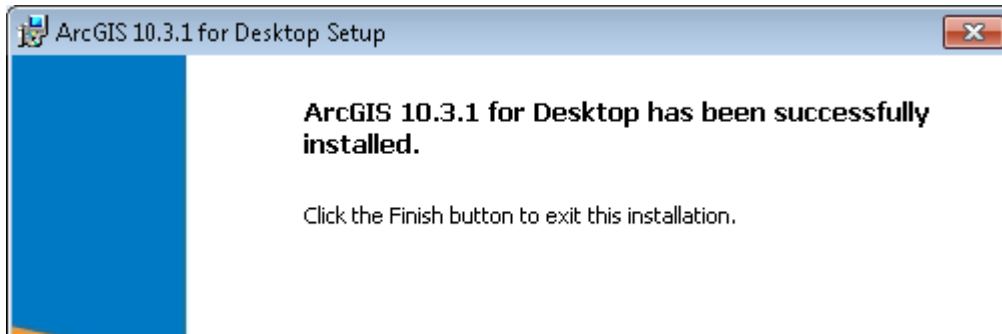
You should end up with a single file that looks like this:

Name	Date modified	Type	Size
ArcGIS_Desktop_103_141985.exe	9/2/2015 6:02 PM	Application	863,138 KB

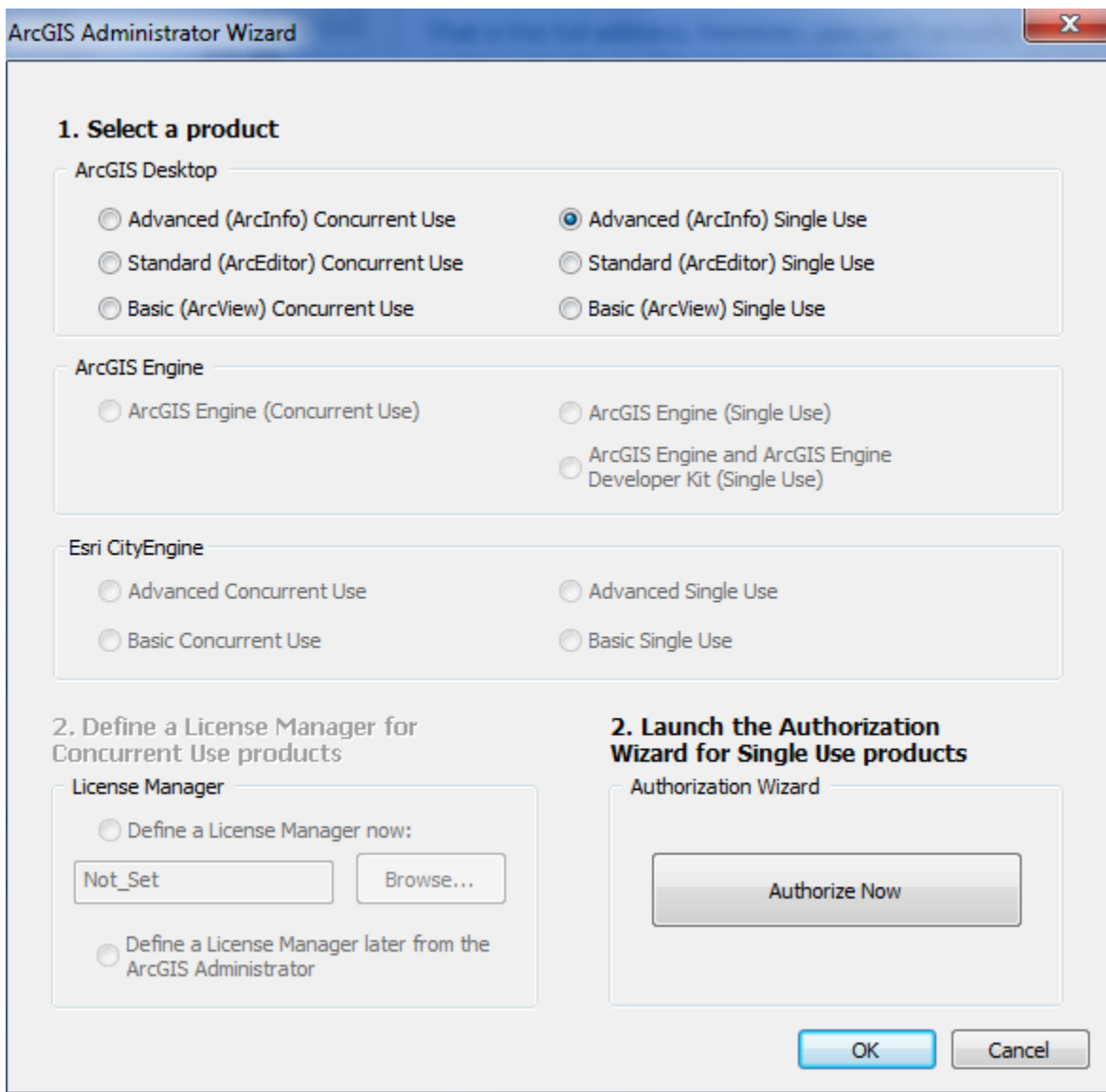
If you don't succeed in getting this file at this location, contact me and I'll arrange for you to get a copy in another way.

(4) Install the Software and Validate your Authorization Number

Double click on the file **ArcGIS_Desktop_10xxxx.exe** and install it on your computer. At the Installation Type step select **Complete**. This takes quite a while, so you might want to get a cup of coffee or do something while the installation goes on. If your screen goes blank, the installation may stop, so move your mouse now and then to keep the screen alive. Hopefully, at the end you'll see:



Immediately that your software installation has been completed, you'll be presented with a ArcGIS Administrator Wizard screen. Select **Advanced (ArcInfo) Single Use** and you'll see the button, **Launch the Authorization Wizard for Single Use Products** be activated.



Hit Authorize Now and enter your Authorization Number

Software Authorization Wizard

Authorization Options
You must authorize the software prior to use. Select from the options below.

Authorization Options

- I have installed my software and need to authorize it.
- I have already authorized the software and need to authorize additional extensions.
- I have received an authorization file from Esri and am now ready to finish the authorization process.

Software Authorization Wizard

Authorization Method
Select the method you want to use to authorize the software.

- Authorize with Esri now using the Internet.
(This automatic method is the easiest way to authorize. It requires an Internet connection.)
- Authorize at Esri's website or by email to receive your authorization file.
- Authorize your software from a local license server.

Software Authorization Wizard

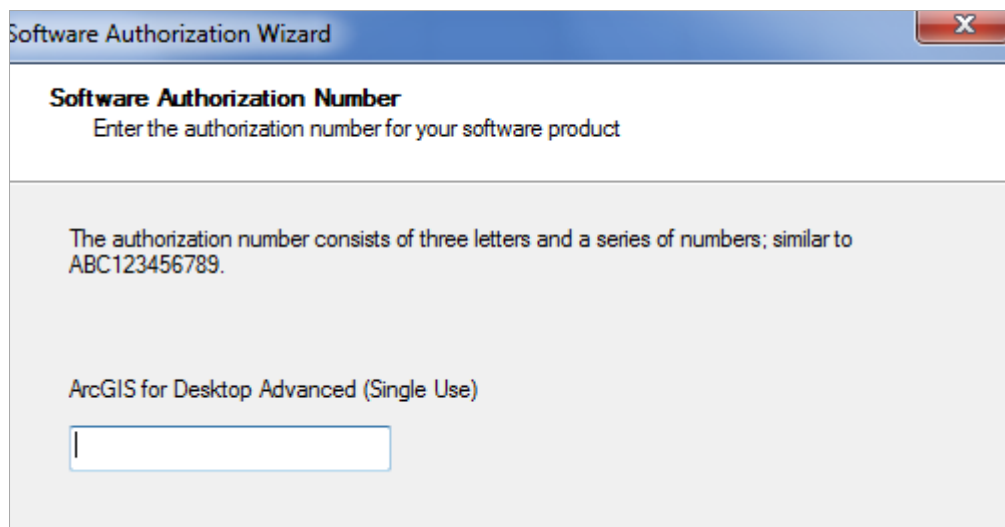
Authorization Information
We will use the following information to verify our records and authorize your use of the software. (* required field)

*First Name:

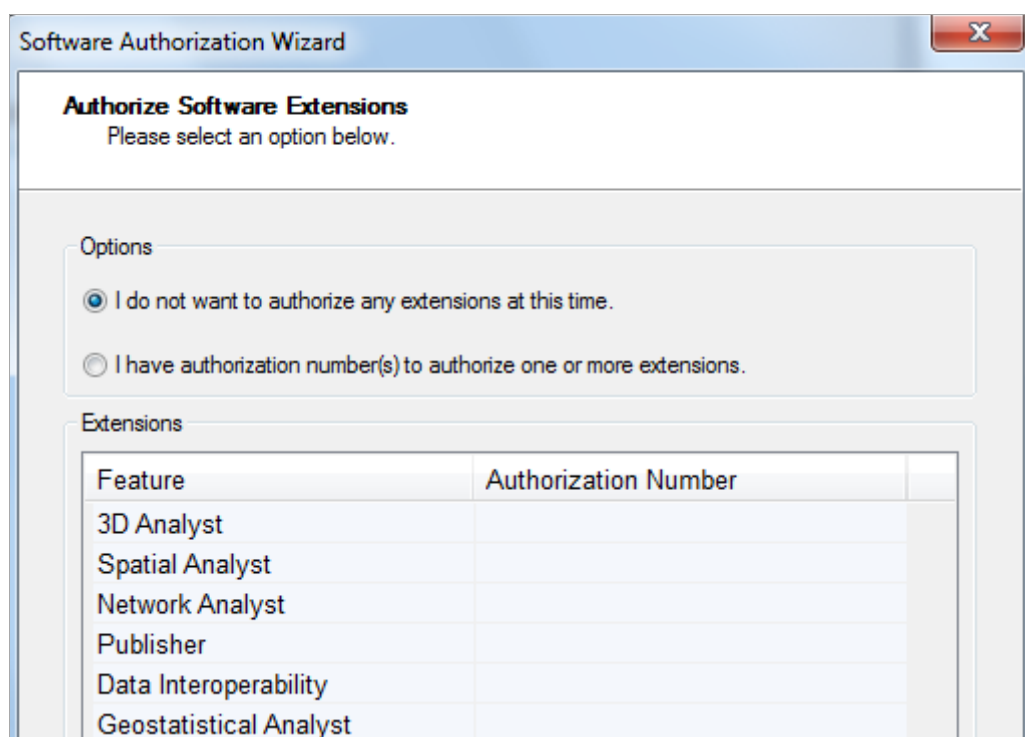
*Last Name:

*Organization:

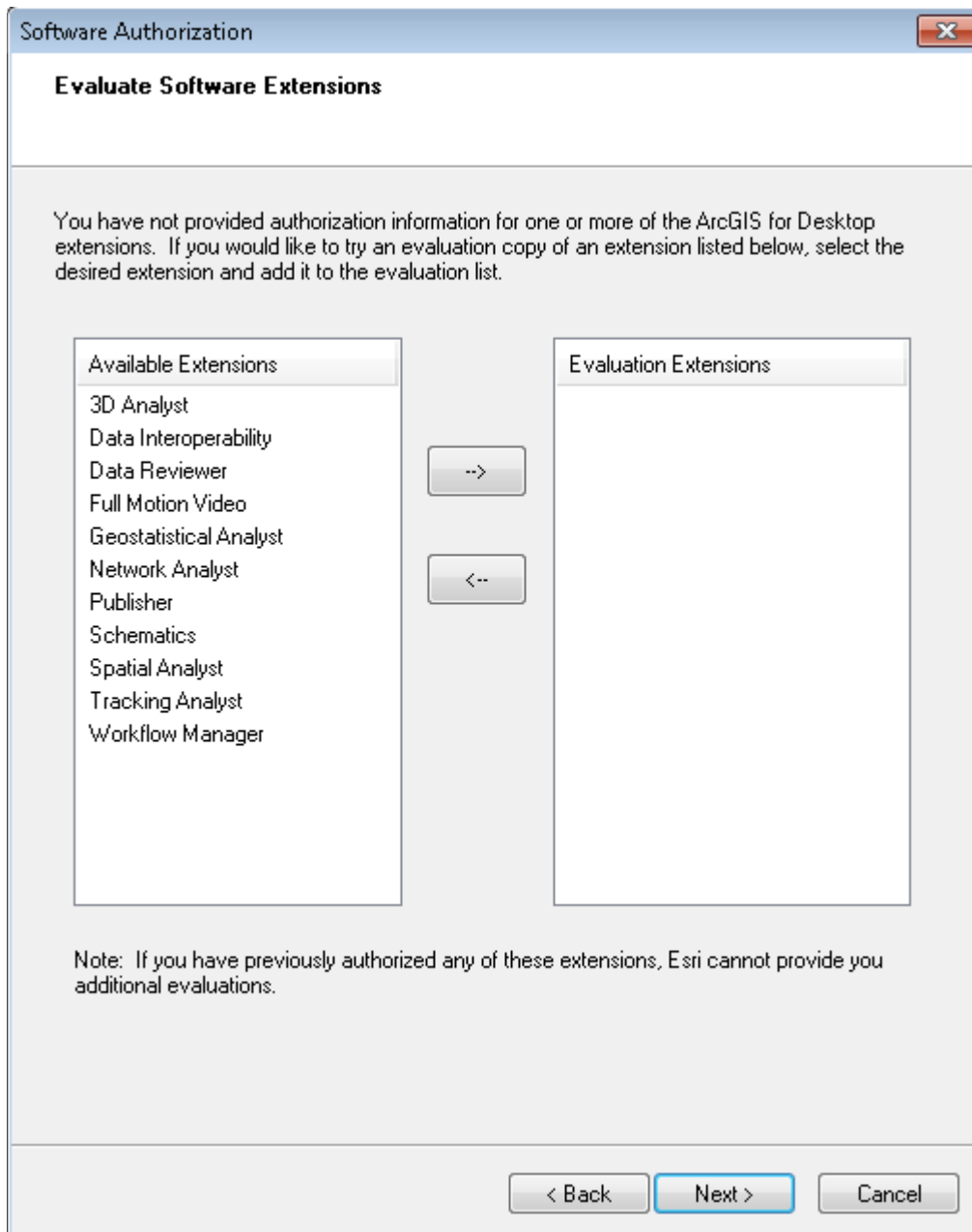
Department:



Leave the default option to not **Authorize Software Extensions**. They will be authorized automatically.



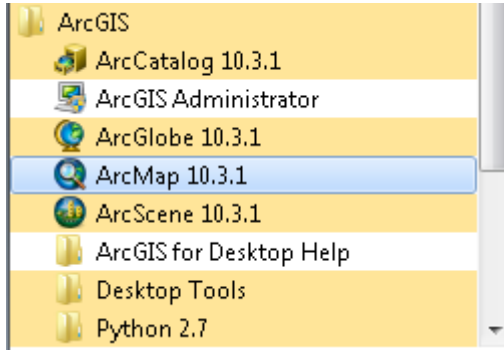
Also leave the defaults at the **Evaluate Software Extensions** step.



Finish this process and you are done!

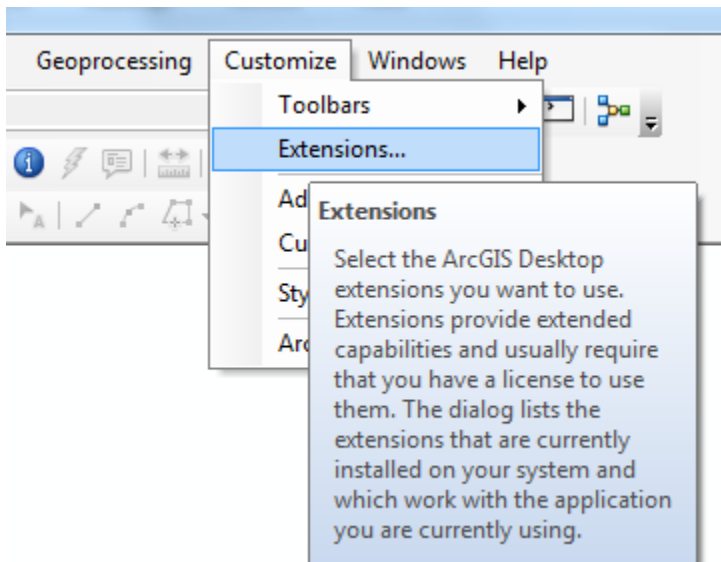
(5) Start Using the Software

Open **ArcMap** and select the **A new empty map** option. If you are using Windows 7, hit the Start button and you'll see a series of options for ArcGIS. Select ArcMap.

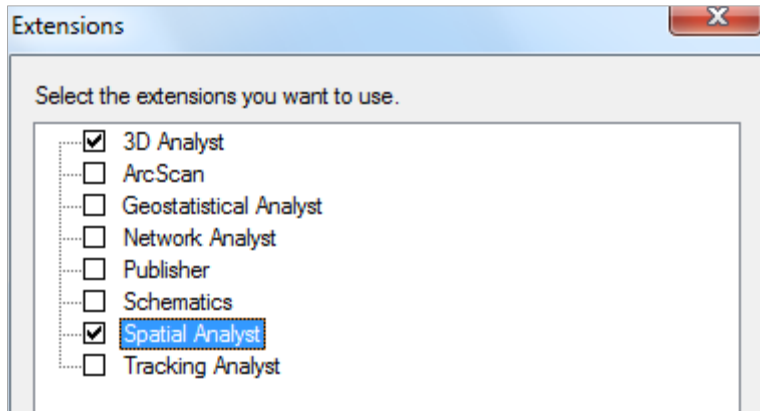


If you are using Windows 8, you'll see (or the version 10.3 equivalent) in your Windows display. If you don't see that, then just type "ArcMap.." and you'll see the program symbol appear.

You can check the availability of software extensions by choosing **Customize/Extensions**



And then select the Extensions that you want to use. We'll use **Spatial Analyst** and **3D Analyst** in this class.



Ok, you are good to go now!