

# Student Installation of ArcGIS 10.2.2 for GIS in Water Resources University of Texas at Austin, University of North Carolina, Utah State University

Prepared by David R. Maidment  
September 2014

There are five steps to this process:

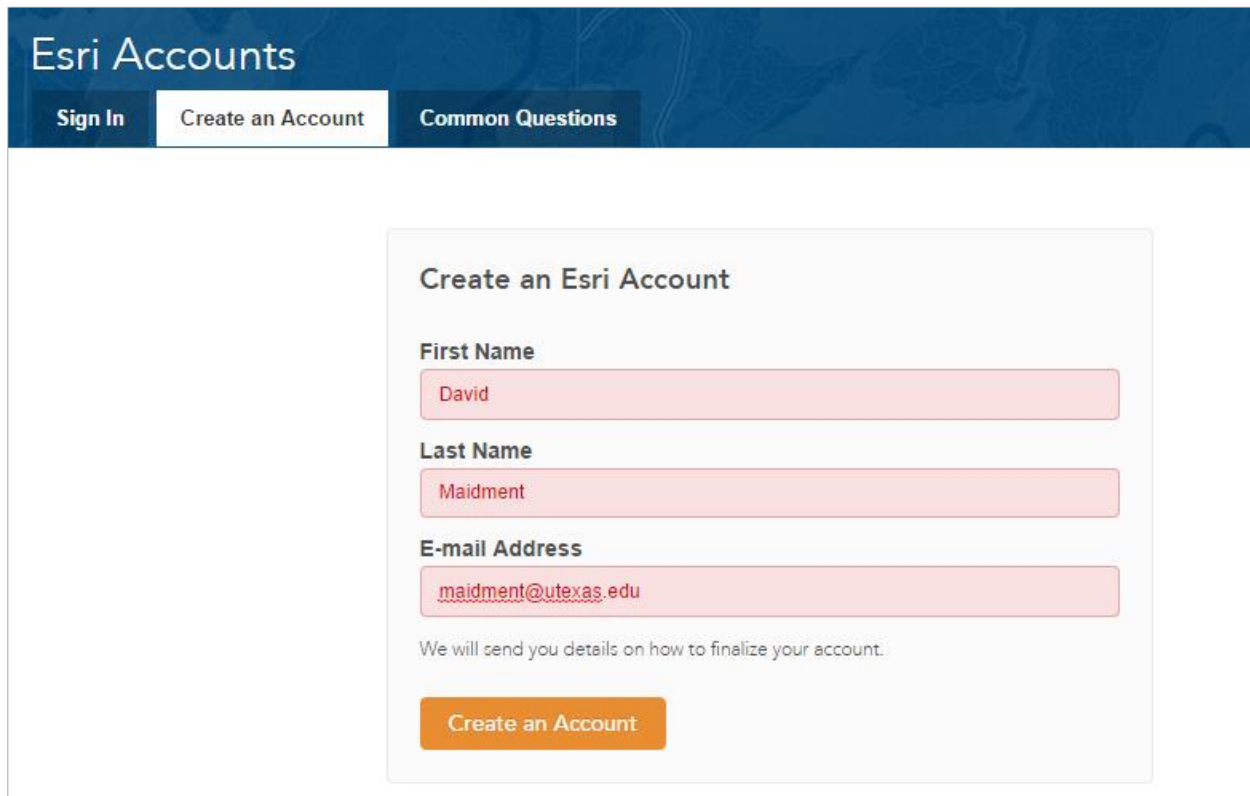
- (1) [Get an ESRI Account](#)
- (2) [Prepare your computer](#)
- (3) [Obtain an authorization number and the software](#)
- (4) [Install the software and validate your authorization number](#)
- (5) [Start using the software](#)

Here are the instructions for these steps:

## (1) ESRI Account

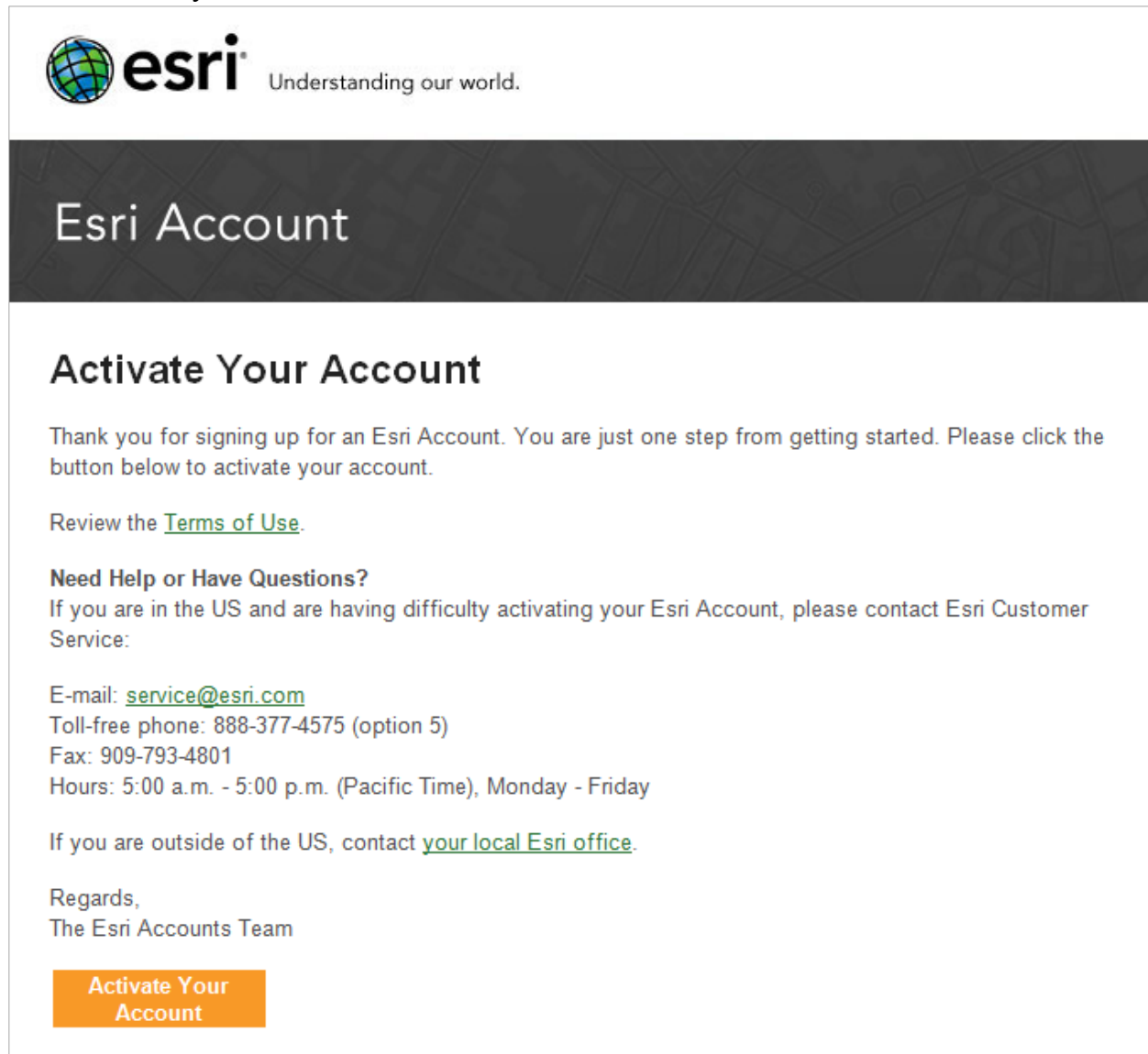
If you already have a Username and Password for your ESRI Account, then skip this step.

If not, go to <https://webaccounts.esri.com/CAS/index.cfm> and choose **Create an Account**. Add your name and email address. *It is very important to use the same email address here as you are using for the GIS in Water Resources class*, and that I have emailed back to you. The email address is how things get connected together inside of the ArcGIS web system.



The screenshot shows the 'Esri Accounts' website interface. At the top, there is a dark blue header with the text 'Esri Accounts' and three navigation buttons: 'Sign In', 'Create an Account', and 'Common Questions'. The 'Create an Account' button is highlighted. Below the header is a white form titled 'Create an Esri Account'. The form contains three input fields: 'First Name' with the value 'David', 'Last Name' with the value 'Maidment', and 'E-mail Address' with the value 'maidment@utexas.edu'. Below these fields is a small text line: 'We will send you details on how to finalize your account.' At the bottom of the form is an orange button labeled 'Create an Account'.

Once you hit “Create an Account”, you will sent an email, as shown below, which you can click on to “Activate your Account”



The screenshot shows an email from Esri. At the top left is the Esri logo, which consists of a globe icon followed by the word "esri" in a bold, lowercase sans-serif font, and the tagline "Understanding our world." to its right. Below the logo is a dark grey horizontal bar with the text "Esri Account" in white. The main body of the email has a white background. It starts with the heading "Activate Your Account" in bold. Below this is a paragraph of text: "Thank you for signing up for an Esri Account. You are just one step from getting started. Please click the button below to activate your account." This is followed by a link: "Review the [Terms of Use](#)." Then, a section titled "Need Help or Have Questions?" provides contact information for US customers: "If you are in the US and are having difficulty activating your Esri Account, please contact Esri Customer Service:" followed by "E-mail: [service@esri.com](mailto:service@esri.com)", "Toll-free phone: 888-377-4575 (option 5)", "Fax: 909-793-4801", and "Hours: 5:00 a.m. - 5:00 p.m. (Pacific Time), Monday - Friday". For non-US customers, it says "If you are outside of the US, contact [your local Esri office](#)." The email concludes with "Regards," and "The Esri Accounts Team". At the bottom, there is an orange rectangular button with the text "Activate Your Account" in white.

You’ll be presented with a large screen with a lot of information that needs to be filled in. Fill out this screen and choose **Create Account** at the bottom.

**Welcome, David Maidment**

---

**Your Account Login**

---

**Username**

6 to 24 characters in length; letters, numbers and '@\_.' characters only.

**Password**

**Confirm Password**

Password must be at least 8 characters and have at least one number and one letter.

---

**Profile Information**

---

**Organization**

**Address**

This will establish your User Name and Password for ArcGIS Online and for validating your software.

## **(2) Prepare Your Computer**

- (a) Check the ESRI System Requirements to make sure your computer has the required hardware and software to support the installation of ArcGIS  
<http://resources.arcgis.com/en/help/system-requirements/10.2/>

Please note that ArcGIS runs under the Windows operating system and does not run on Macintosh computers, unless you have a boot option to bring up the Macintosh using Windows. ArcGIS is a fairly large program and its not well suited for “vintage” laptop or desktop computers. If you have difficulty loading or running the program on your computer, it may not

really have enough capacity to do that. In that case, you can use the computers in one of the university labs.

Be careful to ensure that your computer has the right operating system and also the necessary Service Packs installed for that operating system. If you've had your computer for a long time and not installed any Service Pack updates, your operating system might not be up to date enough to run ArcGIS Desktop.

(b) If necessary, install the Microsoft .NET Framework. ArcGIS will run with .Net Framework 3.5.1 or later. <http://www.microsoft.com/en-us/download/details.aspx?id=22>

(c) If you already have a previous version of ArcGIS Desktop installed on your computer, you'll need to Uninstall it before installing the new one. To do this, Go to **Control Panel/Programs and Features** and right click on the icon for ArcGIS and follow the Uninstall instructions.

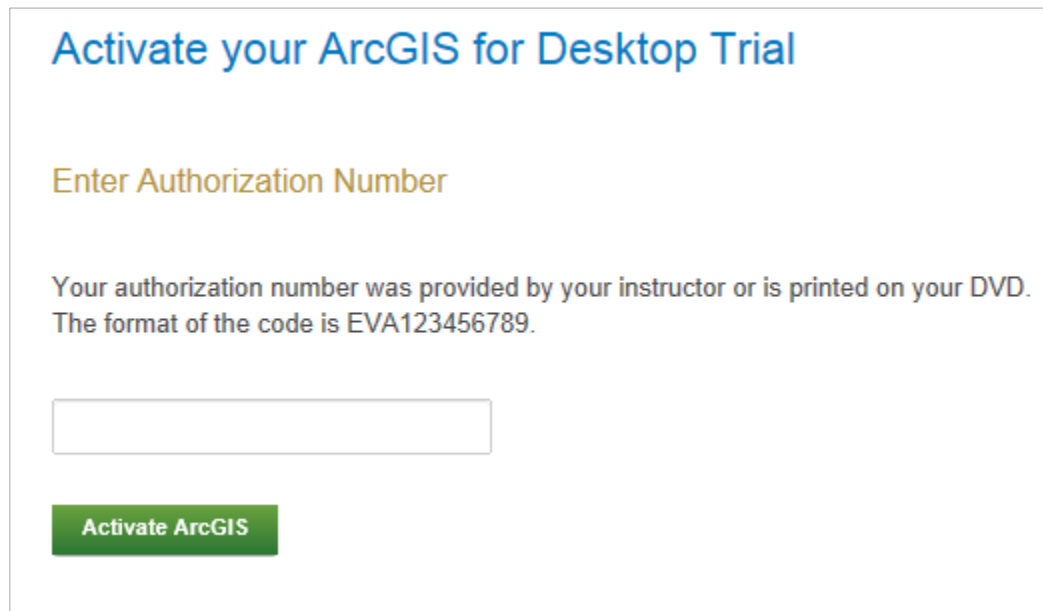
### (3) Obtain an Authorization Number and the Software

Your instructor will send you a software authorization number with the form EVA123456789. This allows you to use one copy of the ArcGIS Desktop software and its extensions for one year on your own computer.

Go to **ArcGIS for Desktop Student Trial**

<http://www.esri.com/landing-pages/software/arcgis/arcgis-desktop-student-trial>

and login with the Username and Password for your ESRI Account. You'll be asked to input your Authorization Number and then Activate ArcGIS.



Activate your ArcGIS for Desktop Trial

Enter Authorization Number

Your authorization number was provided by your instructor or is printed on your DVD.  
The format of the code is EVA123456789.

Activate ArcGIS

You will be presented with a choice as to Versions, choose Version 10.2.2

## Select a Version

Select the version of ArcGIS for Desktop you would like to download if you have not already received a DVD. If you have a DVD from your instructor, please follow the instructions in the Install Guide.

ArcGIS 10.2.2 for Desktop

ArcGIS 10.2.1 for Desktop

ArcGIS 10.2 for Desktop

ArcGIS 10.1 for Desktop

ArcGIS 10.0 for Desktop

Here are the instructions on how to install the software. Use your EVA number not the one shown below.

Please follow the steps below to download and install ArcGIS 10.2.2 for Desktop.

1. If you do not currently have an earlier version of ArcGIS installed on your machine, proceed to step 2.


If you have ArcGIS version 10.1 or later installed, you do not need to uninstall it before installing version 10.2.2; the ArcGIS setup package will detect and upgrade your ArcGIS for Desktop software. If you have ArcGIS version 10.0 or earlier installed, please uninstall it using the Uninstall Utility (download below) before installing ArcGIS 10.2.2.

2. Download ArcGIS for Desktop, Microsoft .NET Framework 3.5, and the other files you would like to install. Please note that ArcGIS Data Interoperability, ArcGIS Data Reviewer, and ArcGIS Workflow Manager require ArcGIS for Desktop.
  - When downloading with the Esri Download Manager, you can select and download multiple products. However, only one product should be launched at a time when the downloads are complete.
  - Make sure you have write access to your download directory location as well as your ArcGIS installation directory location, and that no one is accessing it.
3. Install the Microsoft .Net Framework 3.5 Service Pack 1 below.
4. Install and authorize ArcGIS for Desktop
  - Select a destination folder to extract the install files to. If you choose, you can automatically launch the setup after the files have been extracted.
  - When prompted, select **ArcGIS for Desktop Advanced Single Use**.
  - When prompted, accept the default, **I do not wish to authorize any extensions** at this time. The extensions will be authorized automatically.
  - Enter your authorization number: **EVA191823434**.

In the succeeding menu, select “ArcGIS for Desktop” Download (811 MB). This takes a little while.

File Description	Documentation	Download Size		
Microsoft .Net Framework 3.5 SP1			<a href="#">Microsoft .Net Framework 3.5 SP1</a>	
ArcGIS Uninstall Utility	<a href="#">Read Me</a>	1.23 MB	<a href="#">Download</a>	English
<b>ArcGIS for Desktop</b>	<a href="#">Install Guide</a>	824.18 MB	<a href="#">Download</a>	English <input type="button" value="v"/>
ArcGIS Data Interoperability for Desktop		518.25 MB	<a href="#">Download</a>	English
ArcGIS Data Reviewer for Desktop	<a href="#">Install Guide</a>	79.38 MB	<a href="#">Download</a>	English
ArcGIS Workflow Manager for Desktop	<a href="#">Install Guide</a>	56.14 MB	<a href="#">Download</a>	English
ArcGIS Tutorial Data for Desktop		1.65 GB	<a href="#">Download</a>	English

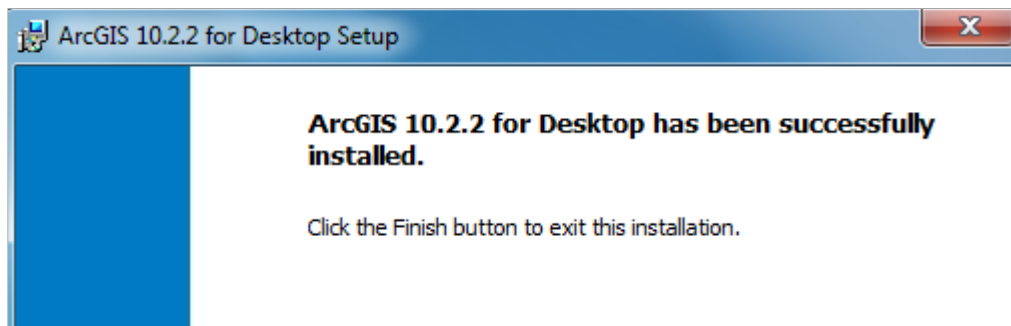
You should end up with a single file that looks like this:

Name	Date modified	Type	Size
 ArcGIS_Desktop_1022_140415.exe	9/3/2014 1:51 AM	Application	843,128 KB

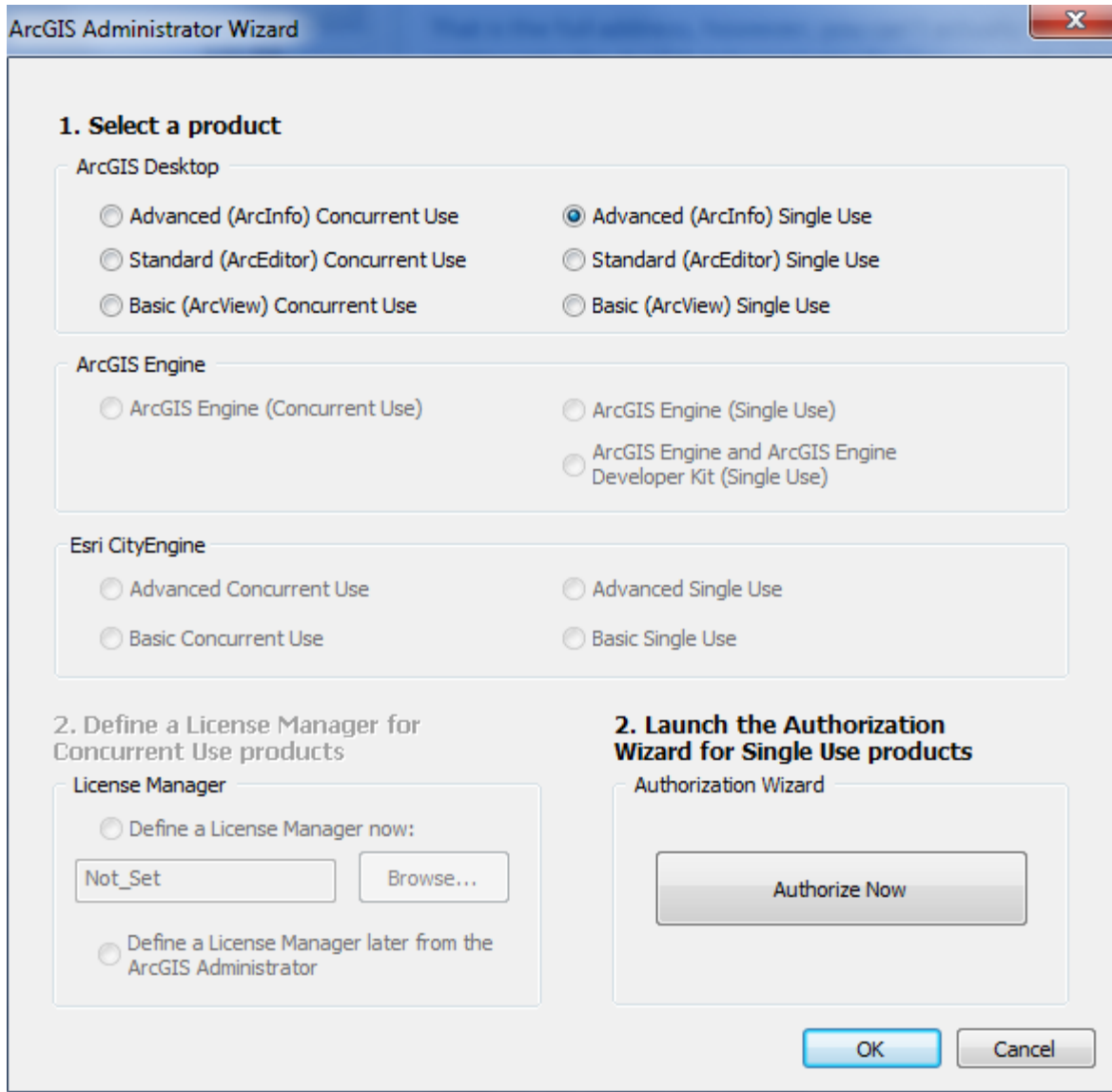
If you don't succeed in getting this file at this location, contact me and I'll arrange for you to get a copy in another way.

#### (4) Install the Software and Validate your Authorization Number

Double click on the file **ArcGIS\_Desktop\_1022\_140415.exe** and install it on your computer. This takes quite a while, so you might want to get a cup of coffee or do something while the installation goes on. If your screen goes blank, the installation may stop, so move your mouse now and then to keep the screen alive. Hopefully, at the end you'll see:



Immediately that your software installation has been completed, you'll be presented with a ArcGIS Administrator Wizard screen. Select **Advanced (ArcInfo) Single Use** and you'll see the button, **Launch the Authorization Wizard for Single Use Products** be activated.



**Hit Authorize Now** and enter your Authorization Number

Software Authorization Wizard

### Authorization Options

You must authorize the software prior to use. Select from the options below.

Authorization Options

- I have installed my software and need to authorize it.
- I have already authorized the software and need to authorize additional extensions.
- I have received an authorization file from Esri and am now ready to finish the authorization process.

Software Authorization Wizard

### Authorization Method

Select the method you want to use to authorize the software.

- Authorize with Esri now using the Internet.  
(This automatic method is the easiest way to authorize. It requires an Internet connection.)
- Authorize at Esri's website or by email to receive your authorization file.
- Authorize your software from a local license server.

Software Authorization Wizard

### Authorization Information

We will use the following information to verify our records and authorize your use of the software. (\* required field)

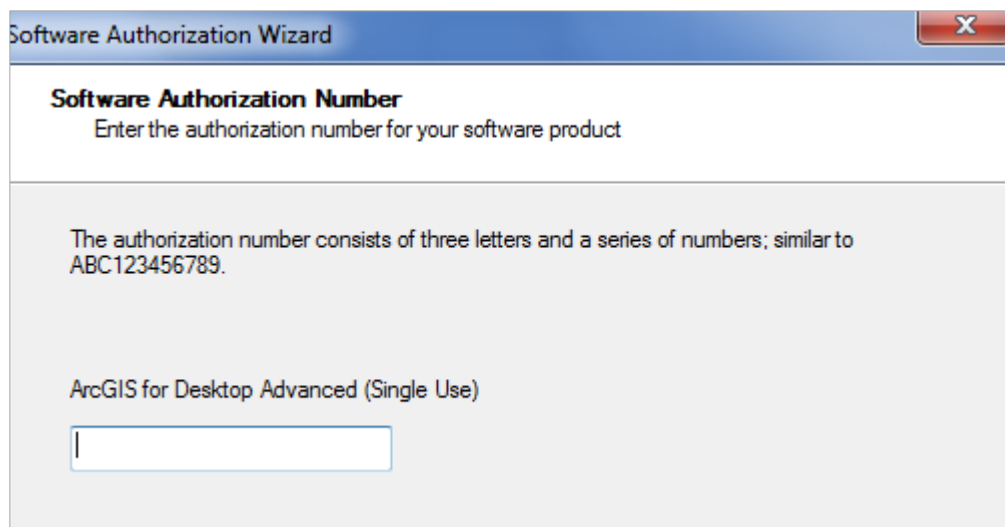
\*First Name:

\*Last Name:

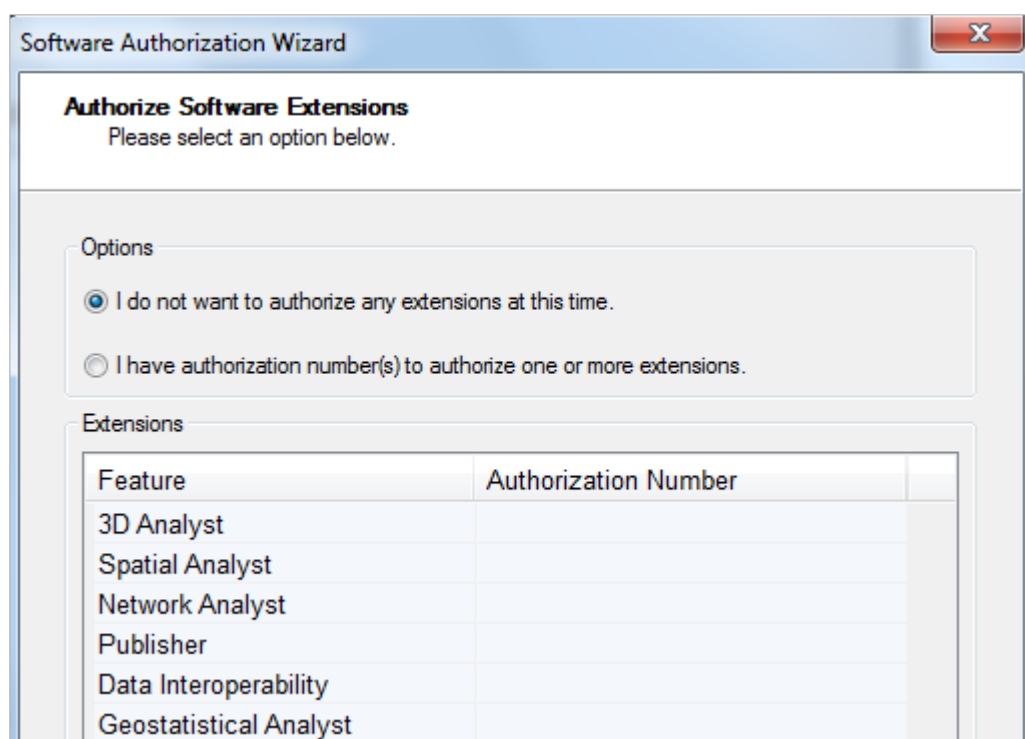
\*Organization:

Department:





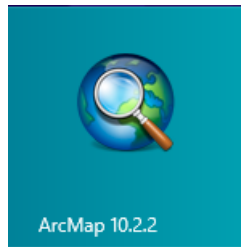
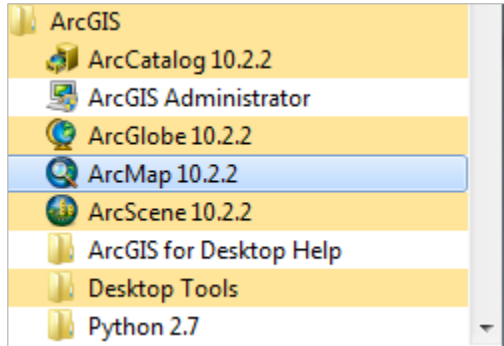
Leave the default option to not **Authorize Software Extensions**. They will be authorized automatically.

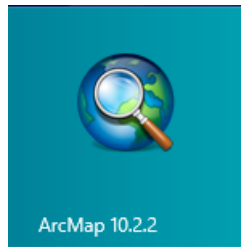


Finish this process and you are done!

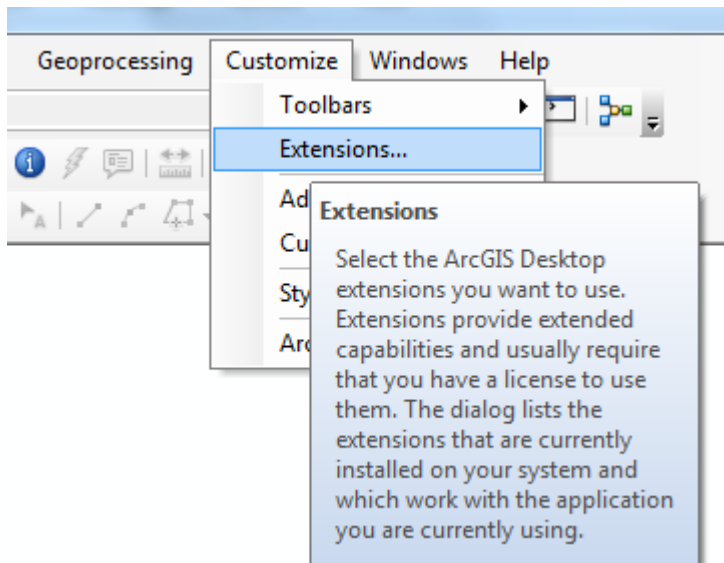
## (5) Start Using the Software

Open **ArcMap** and select the **A new empty map** option. If you are using Windows 7 or Windows XP, hit the Start button and you'll see a series of options for ArcGIS. Select ArcMap.

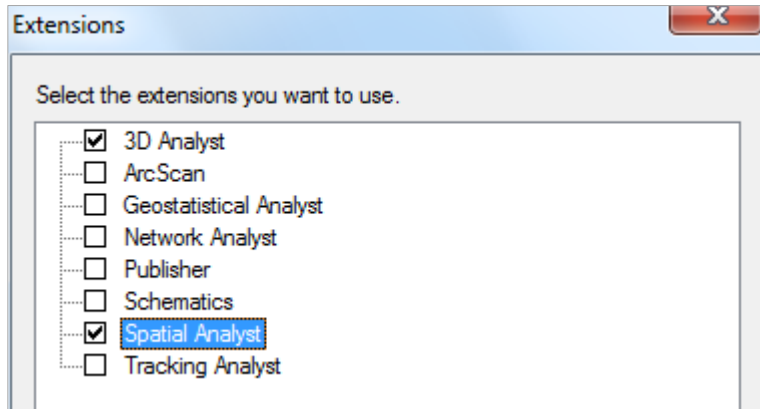


If you are using Windows 8, you'll see  in your Windows display. If you don't see that, then just type "ArcMap.." and you'll see the program symbol appear.

You can check the availability of software extensions by choosing **Customize/Extensions**



And then select the Extensions that you want to use. We'll use **Spatial Analyst** and **3D Analyst** in this class.



Ok, you are good to go now!