

## GIS in Water Resources, Instructions for Accessing and using ArcGIS Pro

The ArcGIS Pro software is available for Windows computers. On a computer with a different operating system you may need to use a Windows virtual machine.

First you need an ESRI account. It is better (for this class) to have an ESRI account associated with the USU Organization ESRI account, so that you can use online processing that is only available to users linked with Organization accounts. I will request accounts for all students in this class (based on the class list and email addresses of registered students in banner) and you will receive an email from "ArcGIS Notifications notifications@arcgis.com" that has the subject "An invitation to join an ArcGIS Online organization, Utah State University" that invites you to set up an ESRI account. Follow the instructions in this email to create an account.

Once your ESRI account has been created and associated with an Online organization, the USU account administrator needs to authorize it for use of ArcGIS pro. This may take up to a day as it is a manual step that requires her to log in and link your account.

### Using a computer with ArcGIS Pro already installed

ArcGIS Pro is installed on the computers in ENGR 305 and maybe elsewhere on campus.

Start ArcGIS Pro from the Start Menu. You will be prompted to Sign In. Sign in with your ESRI account

ArcGIS Sign In

ArcGIS Pro wants to access your ArcGIS Online account information

Sign In **esri**

Username  
dtarboton

Password  
••••••

**SIGN IN** CANCEL

[Forgot password?](#) [Forgot username?](#)


OR

Sign in with **ENTERPRISE ACCOUNT**

Sign in with **f** **G+**

Sign me in automatically [Configure your licensing options](#)

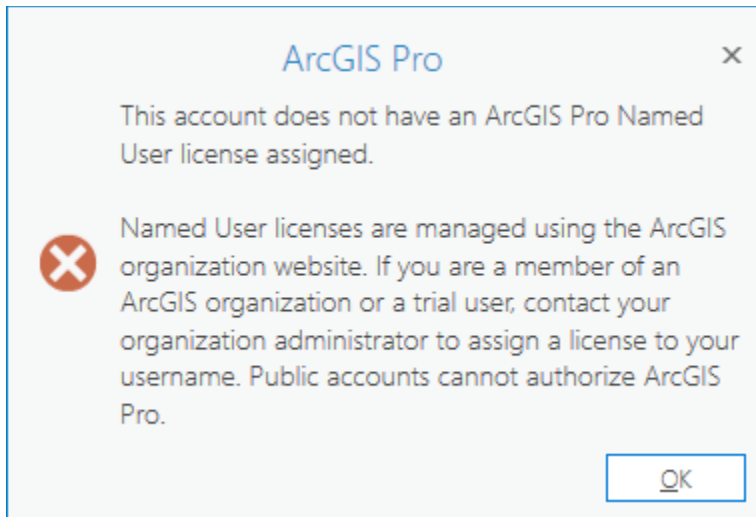
ArcGIS Pro developed by:



Esri

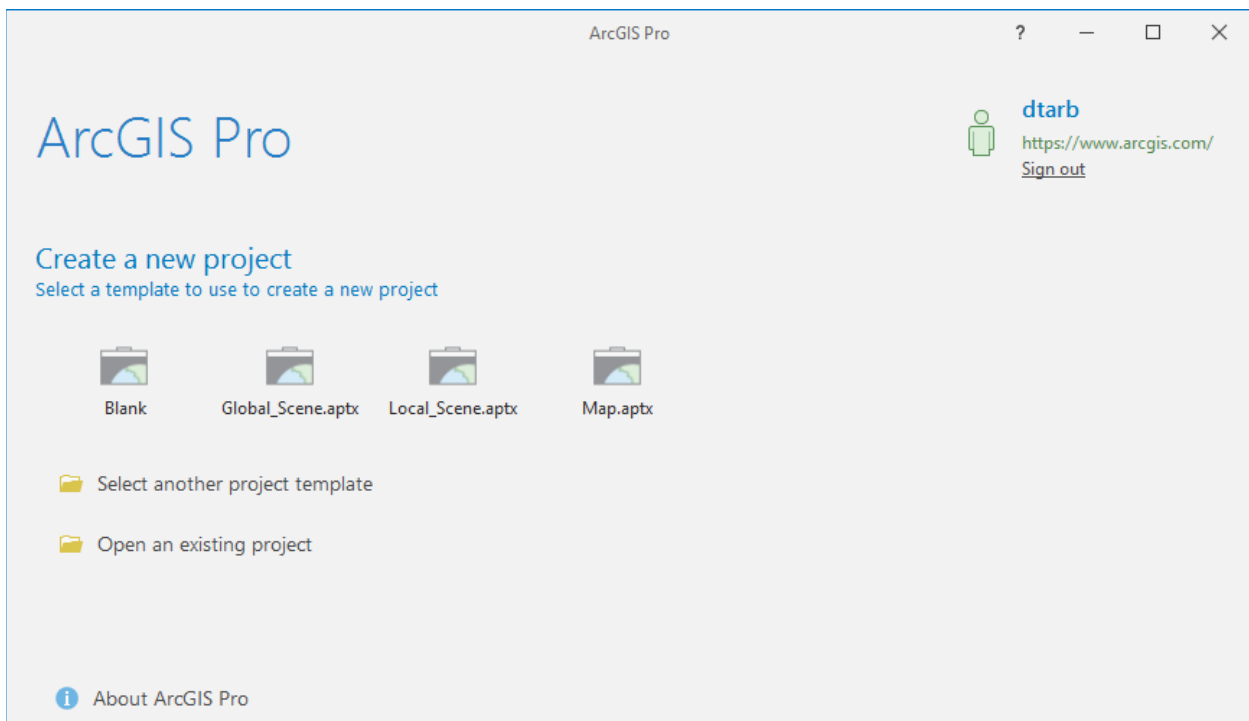
Esri publishes a set of ready-to-use maps and apps that are available as part of ArcGIS. ArcGIS is a mapping platform that enables you to create interactive maps and apps to share within your organization or publicly.

The first time you may receive a message



If it is more than a business day since you obtained your account associated with the USU organization and it seems to be taking too long for you to get past this error, contact your instructor.

Once the USU Organization administrator has linked your account to the USU organization, you should be able to open ArcGIS Pro at get to the start screen that allows you to create a new project or open an existing project



## Installing ArcGIS Pro on your own computer

Download the installation file ArcGISPro\_20\_156181.exe from the class website.

Double click in this file to begin the installation and click through the steps as you would normally do for installing software.

The end of the installation process gives you the option to run ArcGIS Pro now. Leave this selected to Open ArcGIS Pro, or open ArcGIS Pro from the Start Menu.

Enter your ESRI account username and password.

ArcGIS Sign In

ArcGIS Pro wants to access your ArcGIS Online account information

Sign In **esri**

Username  
dtarboton

Password  
••••••••

**SIGN IN** CANCEL

[Forgot password?](#) [Forgot username?](#)


OR

Sign in with **ENTERPRISE ACCOUNT**

Sign in with **f G+**

Sign me in automatically [Configure your licensing options](#)

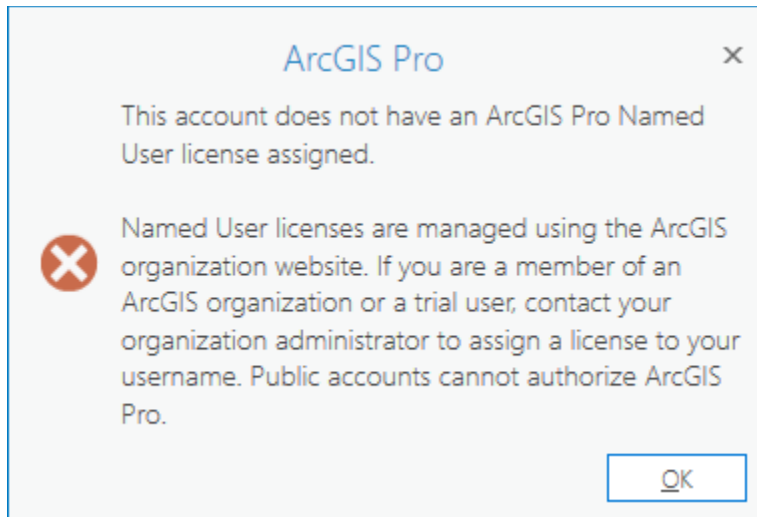
ArcGIS Pro developed by:



Esri

Esri publishes a set of ready-to-use maps and apps that are available as part of ArcGIS. ArcGIS is a mapping platform that enables you to create interactive maps and apps to share within your organization or publicly.

The first time you may receive a message



If it is more than a business day since you obtained your account associated with the USU organization and it seems to be taking too long for you to get past this error, contact your instructor.

Once the USU Organization administrator has linked your account to the USU organization, you should be able to open ArcGIS Pro at get to the start screen that allows you to create a new project or open an existing project

