

Name: _____

GIS in Water Resources Midterm Exam

Fall 2015

There are three questions on this exam. Please do all three. They are not all of equal weight.

Question 1. Map Projections and Distance (30%)

Following is information from ArcGIS on the UTM Projection that applies in Logan, Utah.

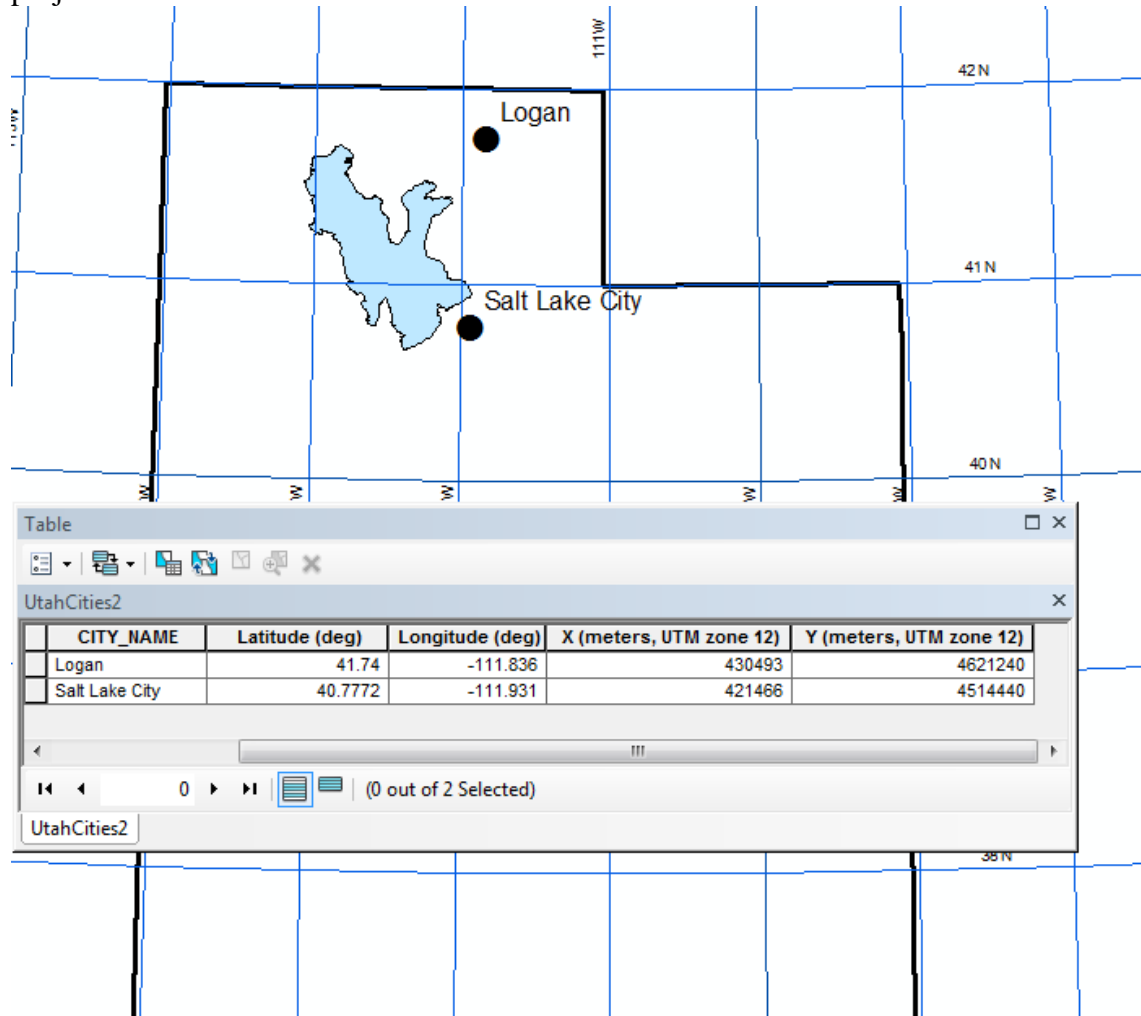
```

NAD_1983_UTM_Zone_12N
WKID: 26912 Authority: EPSG

Projection: Transverse_Mercator
False_Easting: 500000.0
False_Northing: 0.0
Central_Meridian: -111.0
Scale_Factor: 0.9996
Latitude_Of_Origin: 0.0
Linear Unit: Meter (1.0)

Geographic Coordinate System: GCS_North_American_1983
Angular Unit: Degree (0.0174532925199433)
Prime Meridian: Greenwich (0.0)
Datum: D_North_American_1983
Spheroid: GRS_1980
Semimajor Axis: 6378137.0
Semiminor Axis: 6356752.314140356
Inverse Flattening: 298.257222101
    
```

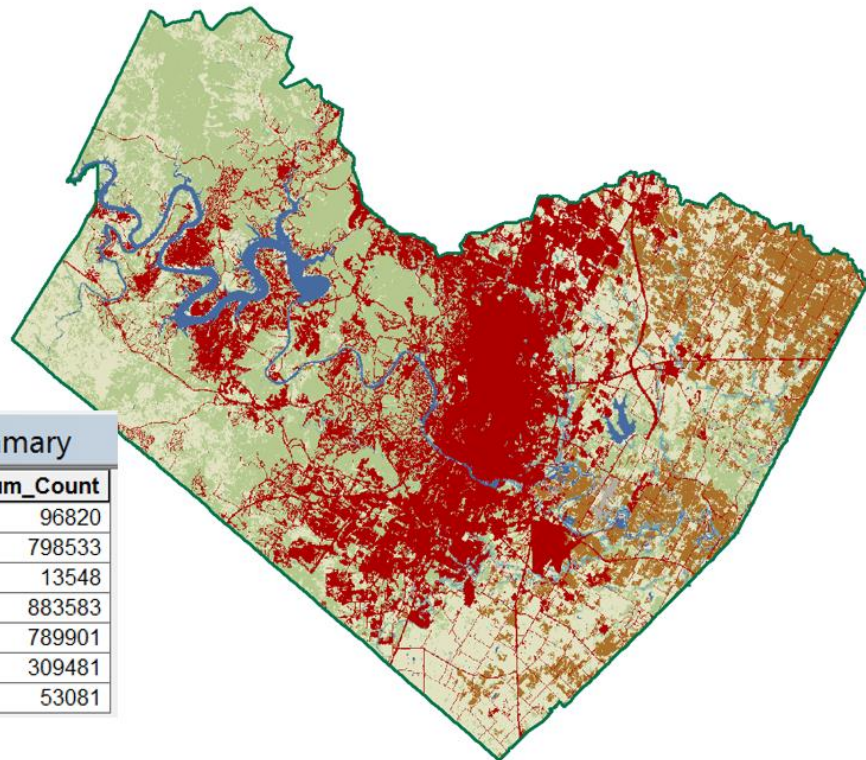
The following map gives location information for Logan and Salt Lake City in geographic and projected UTM zone 12 coordinates.



Question 2. Land Cover Change (30%)

- a) The map below shows the land cover distribution in Travis County, Texas in 2006. The grid has 30m cells. Determine the area of the County (Km^2), the area of Development (Km^2), and the percentage of the land cover that is in Development. These data were obtained from: <http://www.mrlc.gov/nlcd2011.php>

LC_CLASS	
■	OpenWater
■	Development
■	SnowIceBarren
■	Forest
■	ShrubScrubGrass
■	Agriculture
■	Wetland



LandCover2006Summary

	LC_CLASS	Sum_Count
▶	OpenWater	96820
	Development	798533
	SnowIceBarren	13548
	Forest	883583
	ShrubScrubGrass	789901
	Agriculture	309481
	Wetland	53081

(b). The Land Cover distribution for Travis County in 2001 and 2011 is shown below, as measured by the Count of the total number of cells in each land cover class. A lookup table to convert land cover Value field to the LC_Class field is also given below.

CoverLookup		NLCD2001Albers			NLCD2011Albers		
Value	LC_CLASS	OBJECTID *	Value	Count	OBJECTID *	Value	Count
11	OpenWater	1	11	97042	1	11	97585
21	Development	2	21	368516	2	21	363603
22	Development	3	22	192648	3	22	223276
23	Development	4	23	117954	4	23	186327
24	Development	5	24	59699	5	24	83730
31	SnowIceBarren	6	31	2420	6	31	12303
41	Forest	7	41	253982	7	41	227988
42	Forest	8	42	649217	8	42	597773
43	Forest	9	43	19020	9	43	17614
52	ShrubScrubGrass	10	52	493365	10	52	458356
71	ShrubScrubGrass	11	71	330184	11	71	312665
81	Agriculture	12	81	121040	12	81	122501
82	Agriculture	13	82	185071	13	82	188788
90	Wetland	14	90	54556	14	90	51719
95	Wetland	15	95	184	15	95	670

Determine the following:

(1) Area of land cover class Development in 2001 (Km ²)	
(2) Area of land cover class Development in 2011(Km ²)	
(3) Change in Area in land cover class Development 2001 to 2011 (Km ²)	
(4) Percent Area in Travis County that is in Development in 2001	
(5) Percent Area in Travis County that is in Development in 2011	

By how much does the percent area in Development change each five years in Travis County?

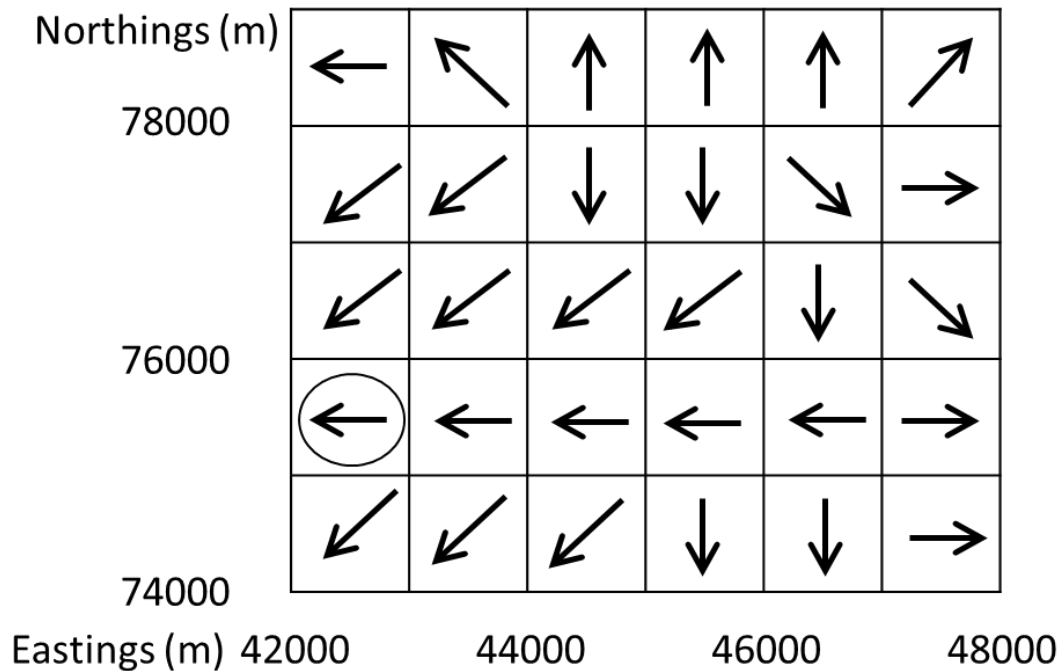
Question 3. Raster Analysis of DEMs (40%)

- a) The following diagram gives elevation values on a **10 m** DEM grid. Identify any pits by shading them and indicate the elevation to which they need to be raised to fill them so that the DEM is hydrologically conditioned and they can drain.

9	8	10	10	10	9
11	10	11	12	13	12
14	10	13	15	14	13
10	7	13	14	12	16
11	8	10	14	15	17
10	9	10	10	17	18

- b) Determine the D8 **flow direction** for the circled grid cell in the diagram above, and draw it as an arrow on the diagram. Calculate the **hydrologic slope** along its flow direction.

- c) The following diagram gives flow directions evaluated from a DEM with **1 Km cell size**. Delineate the watershed draining to the circled basin outlet and sketch it on the diagram.



- d) Write on the diagram the values of flow accumulation for each grid cell in the watershed you delineated by counting how many grid cells drain into each grid cell (as ArcGIS does it).
- e) Calculate the drainage area of the watershed you delineated (Km^2)
- f) Draw on your diagram the stream that would be defined with a flow accumulation threshold of 4 Km^2 , assuming that the stream connects the centers of the cells satisfying this criterion. Determine the length of this stream, and calculate the drainage density of the watershed draining to the circled grid cell.

- g) Assume that mean annual precipitation for the same area as (c) is given in the following raster with a **2 Km cell size**. The south west corner of this raster aligns with the south west corner of the flow direction raster above. Precipitation values are mean annual values in mm. Use dashed lines to draw the grid cells that you used in part (c) on this grid. Draw a solid line along your watershed boundary from part (c).

Northings (m)	78000	860	880	900
	76000	860	870	890
	74000	850	860	870
Eastings (m)	42000	44000	46000	48000

- h) Calculate the mean annual precipitation (mm) over the watershed you delineated in (c).
- i) Determine the corresponding volume of precipitation (m^3/year).
- j) If the mean annual flow measured at the circled grid cell in (c) is $0.08 \text{ m}^3/\text{s}$, calculate the runoff ratio.